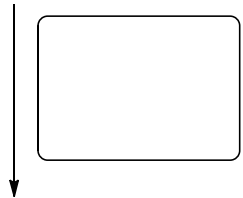
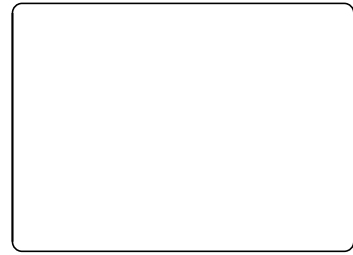
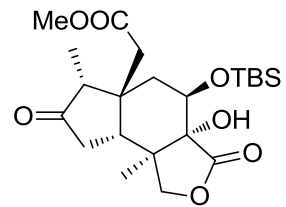


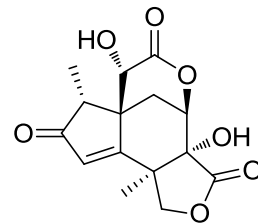
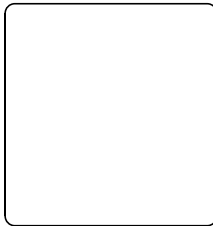
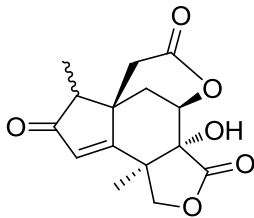
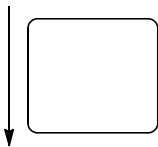
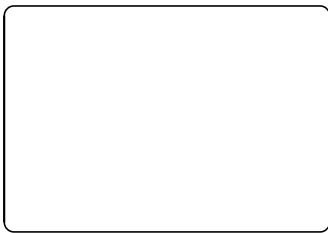
i) O<sub>3</sub>,  
MeOH, DCM  
ii) SMe<sub>2</sub>  
-78°C to RT



1. LDA, TMSCl, Et<sub>3</sub>N  
THF, -78°C to -20°C  
2. Pd(OAc)<sub>2</sub>, O<sub>2</sub>  
DMSO, 75°C



92% (2 steps)



46%  
i) CrO<sub>3</sub>  
Aceton, 0°C  
ii) MeOH, RT



**(-)-Jiadifenin**